

# 63441

## 60" x 40" Single Threshold Shower Base (Regular Profile)



\*Note: Shower base may not be exactly as pictured  
\*1 year limited manufacturer's warranty included

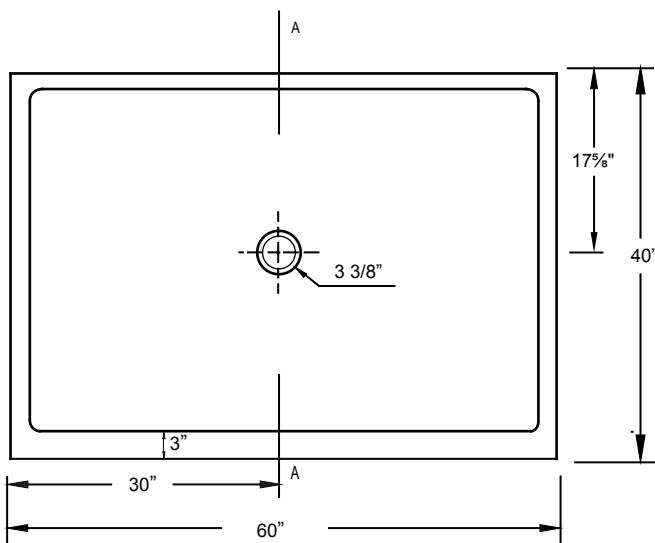
### DESIGN FEATURES

- Acrylic shower base constructed of cast high gloss acrylic and reinforced with a fibreglass backing
- Standard 3<sup>3</sup>/<sub>8</sub>" shower drain opening
- Shower base trimmed to fit 60" x 40" rough opening
- Integral tiling flange for easy installation

### OPTIONS

- Available in White

### SHOWER BASE DIMENSIONS



\*Diagram is not to scale

### Compatible Shower Doors:

R02-ST  
CPL109-60  
2042E554  
9749572



This shower base complies with CSA Standards

\*Shower Drains are not included  
All measurements ± 1/4"

In keeping with our policy of continuing product improvement, Acri-Tec Industries Corp., reserves the right to change product specifications without notice.