

# RUSSO

## SQUARE DROP-IN SINK

- 4461BPX Single Hole
- 4464BPX 4" Center
- 4468BPX 8" Center

### PRODUCT SPECS

- Vitreous China
- Rear overflow hole
- Template supplied
- Faucet not included

### DIMENSIONS

415mm W x 415mm D x 172mm H  
 16¼" W x 16¼" D x 6¾" H

### COMPLIANCE CERTIFICATIONS

- Meets or exceeds the following:
- IAPMO cUPC
  - ASME A112.19.2 / CSA B45.1
  - ADA Guidelines & ANSI A117.1
  - NBC and OBC Section 3.8 barrier free design
  - CSA B651 Standard

### SHIPPING

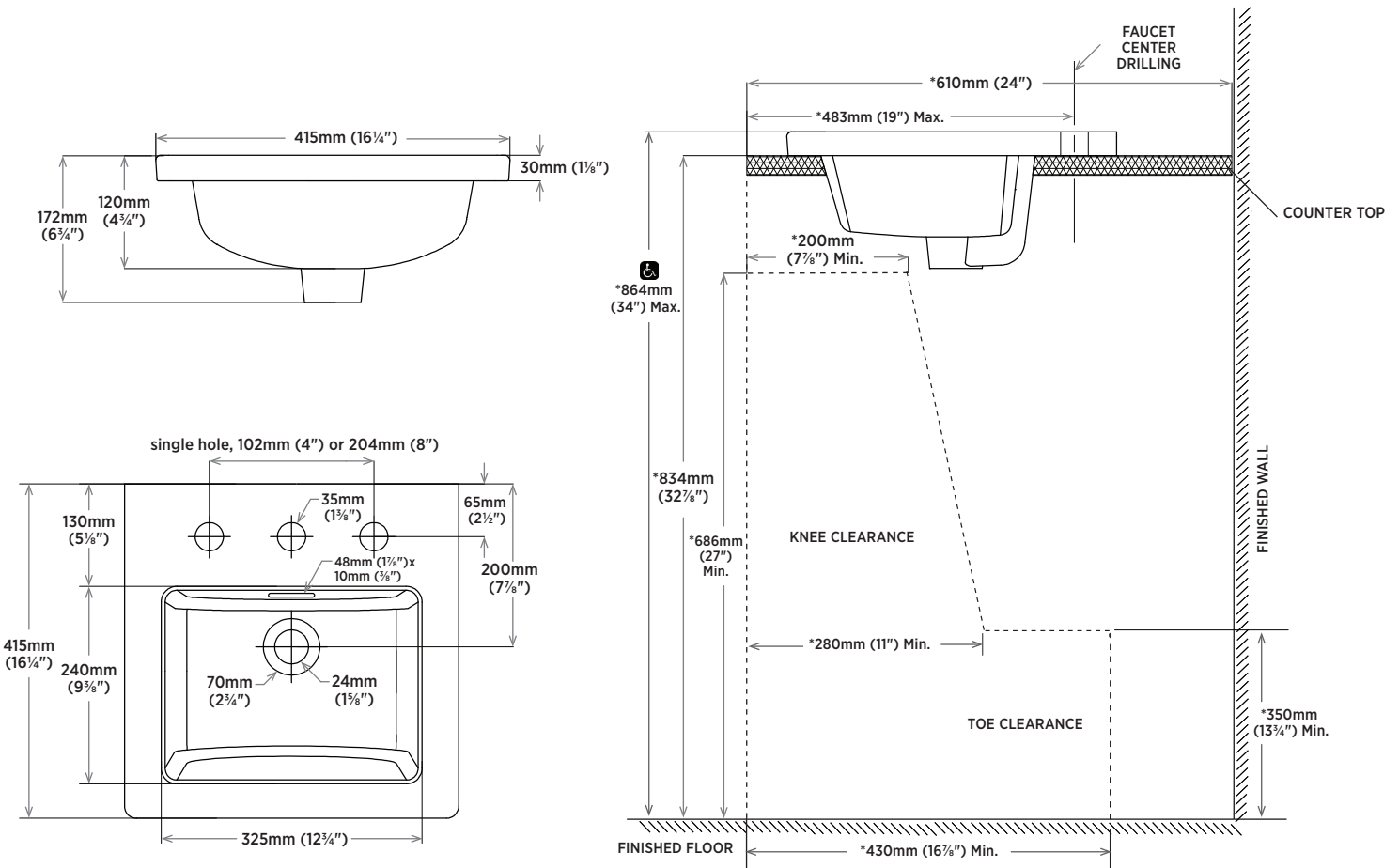
Cube 1.36  
 GW 24 lbs



### TO BE SPECIFIED

Colour:  
 ■ Soft White

**NOTES:** Dimensions of fixtures are nominal and may vary within the range of tolerances established by ASME standard A112.19.2. These measurements are subject to change or cancellation. No responsibility is assumed for use of superseded or voided pages.  
 The product is designed to comply with ADA and CSA B651 barrier free requirements, if installed according to the standard and local building codes. It is the responsibility of the installer to comply with this standard and local building codes prior to installation.



**NOTE:** \*Starred measurements comply with ADA guidelines and CSA B651 barrier free accessibility requirements.

REVISED MAY 2020

**contrac**

5970 CHEDWORTH WAY, UNIT B, MISSISSAUGA, ONTARIO, CANADA L5R 4G5 | CONTRAC.CA