

FEATURES

- Multi-layer moisture-resistant finish for premium protection and durability.
- Five drawers with full storage extension and Blum soft-close drawer mechanism.
- Four door cabinets with large storage area.
- Vanities transport easily and set up in minutes.

MATERIAL

Solid maple and birch wood

DM BATH Two-Year Limited Warranty

See website for warranty information.

AVAILABLE COLOUR FINISHES

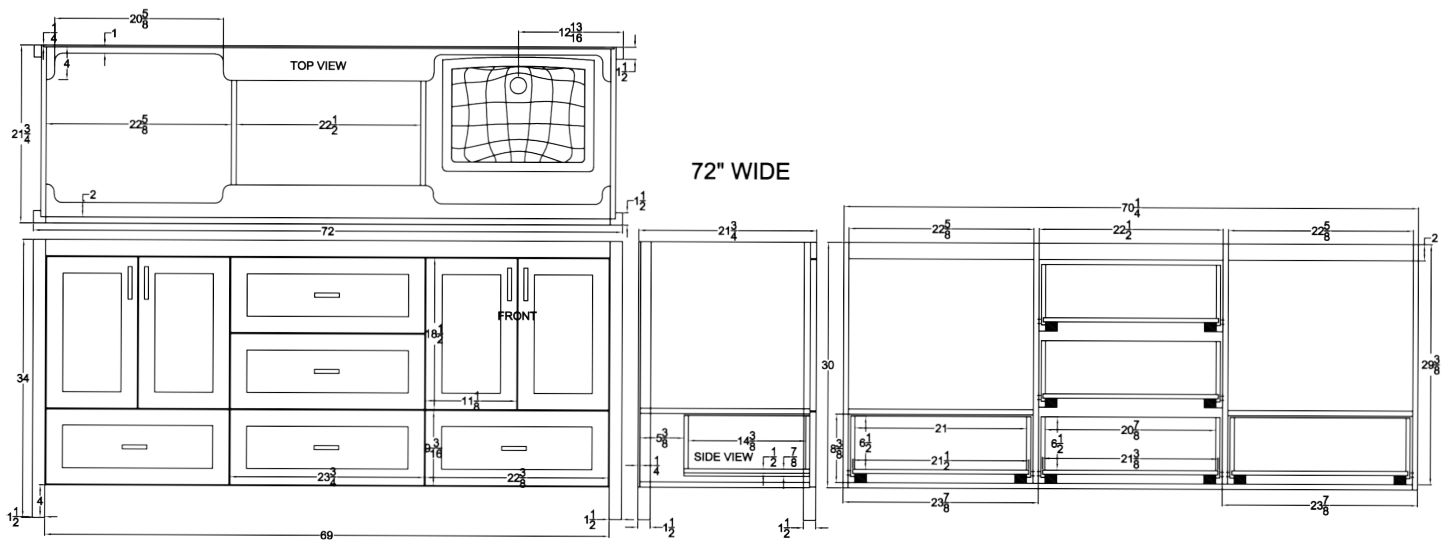
Colour swatches are for reference only.

	DESIGNER WHITE	DMV72DS-DW
	LIGHT GREY	DMV72DS-LG
	COOL GREY	DMV72DS-CG
	IRON GREY	DMV72DS-IG
	MATTE BLACK	DMV72DS-BL
	CUSTOM COLOUR	DMV72DS-CC



RELATED PRODUCTS

DMT73-WQ	PURE WHITE 73" QUARTZ COUNTERTOP
DMT73-WM	WHITE MARQUINA 73" QUARTZ COUNTERTOP
DMT73-BM	BLACK MARQUINA 73" QUARTZ COUNTERTOP
DMT73-SQ	STATUARIO 73" QUARTZ COUNTERTOP
DMS21	21" QUARTZ SIDE SPLASH
DMB73	73" QUARTZ BACKSPLASH
DMS01W	RECTANGULAR UNDERMOUNT CERAMIC SINK



NOTE

Please install product according to installation instructions.

Design Market reserves the right to make revisions without prior notice to product specifications.

All stated sizes are nominal . Last revised June 7, 2018.

SUPPORT@DEZIGNMARKET.COM +1 888 398 8380