



SPECIFICATION SHEET

24" MAKE-UP MODULAR ATTACHMENT

DMMT24



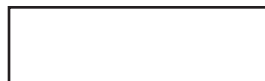
VANITY FEATURES

- Designed & Made in Canada
- Premium Select Canadian Maple & Birch Solid Wood and Plywood
- RICHELIEU® Full Extension concealed soft-close undermount slides.
- Match finished interior cabinet
- Edge-banded interior drawer with lacquer maple finish
- Handles sold separately and not pre-drilled for design convenience
- 1 Drawer

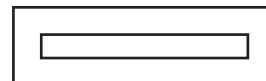
DM BATH 2-YEAR LIMITED WARRANTY

For warranty details visit www.dmbath.com

DOOR STYLE OPTIONS



SLAB PANEL (SL)



SHAKER PANEL (SH)

WOOD FINISH OPTIONS

For full colour options visit www.dmbath.com

RELATED PRODUCTS Sold Separately

- | | |
|--------------|---|
| DMMT30 | 30" Make-Up Modular Attachment |
| DMSC1801 | 18" Storage Cabinet Modular Attachment |
| DMV2401-7201 | 24, 30", 36", 48, 60"SS, 60"DS, 72"DS Freestanding Vanity |
| DMV2402-3602 | 24", 30", 36" Floating Vanity |

SPECIFICATION VARIANCE

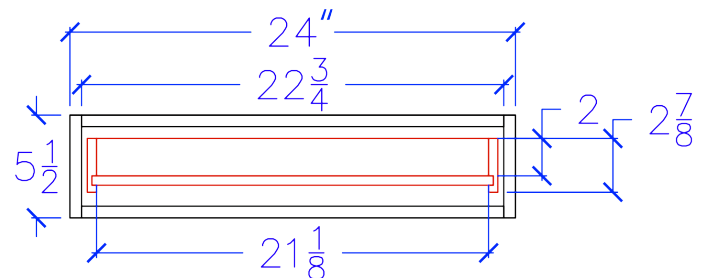
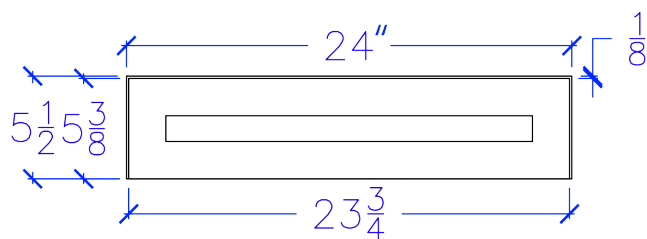
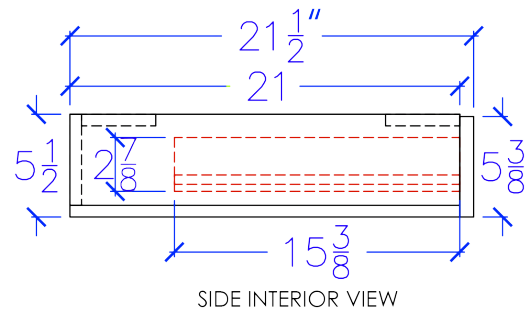
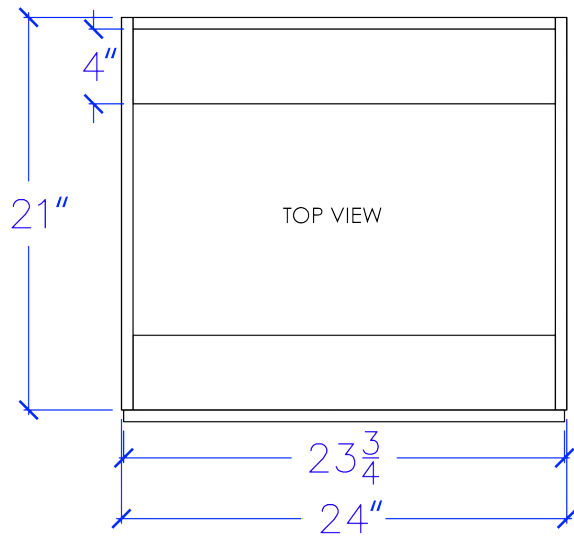
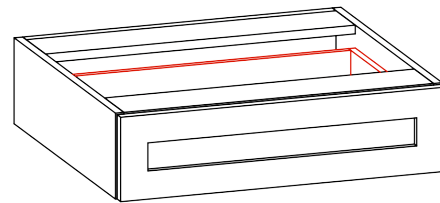
Our products are constructed to maintain close dimensional tolerances that may vary slightly during the manufacturing of materials; normally $\pm 1/8"$, occasionally more. In most cases, this slight variation does not affect installation, appearance or function. We recommend that you measure the actual cabinet before you frame, design or finish the space for your vanity. We can not be held responsible by the end user if this guideline is not followed. We reserve the right to make revisions without prior notice to product specifications.



SPECIFICATION SHEET

24" MAKE-UP MODULAR ATTACHMENT

DMMT24



IMPORTANT NOTE Please install product according to installation instructions.