



4580 W Roosevelt Rd Hillside, IL 60162 www.Lenovasinks.com Phone: 877-733-1098

SPECIFICATIONS

MODEL SS-OT-D33

GENERAL

Fine quality sink formed of heavy duty 16 gauge, type 304 nickel bearing stainless steel.

DESIGN FEATURES

Bowl depth 10" with inside bowl dimensions 14-29/32"X17", and over all 33"X22".

Finish: Inside bowl surfaces polished to a uniform satin finish.

Underside: High density sound absorption pads covered with a thick rubberized insulation layer on all bottom surfaces.

Mounting Type: Undermount or Topmount

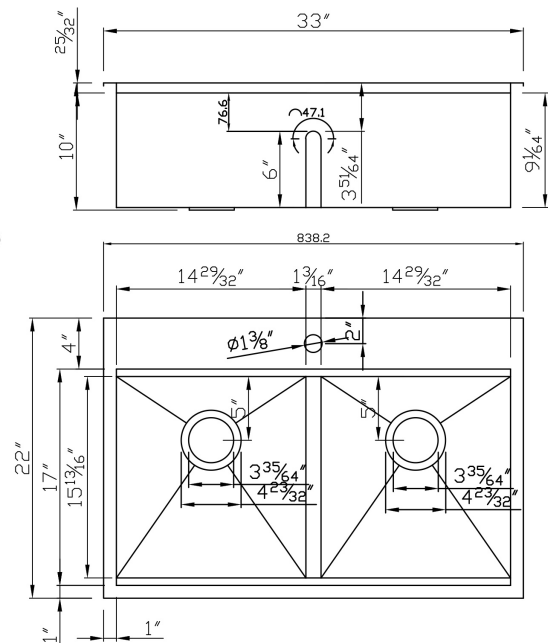
Other: Drain opening 3 1/2".



CUPC certified

Minimum cabinet size 33"

Product shall be specified as SS-OT-D33



OPTIONAL ACCESSORIES:

Sink Drain: A-SS-01, A-SS-02

Stainless Steel Colander: SS-AC-LE

Bamboo Cutting Board: A-CB-03

Stainless Steel Grids: GOTD33

Stainless Steel Rolling Grid: SS-AC-GR

Warranty:

Limited life time warranty against manufacturer defects and craftsmanship.